

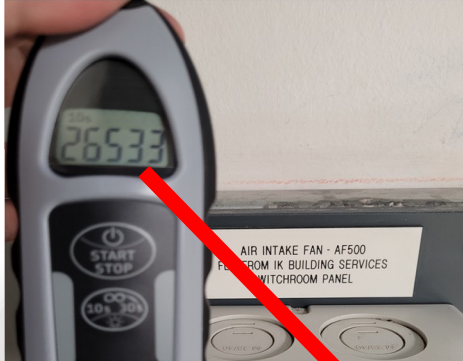
Bearing Damage Stopped at the Source.



Pet Food Partners
Our Expertise. Your Success

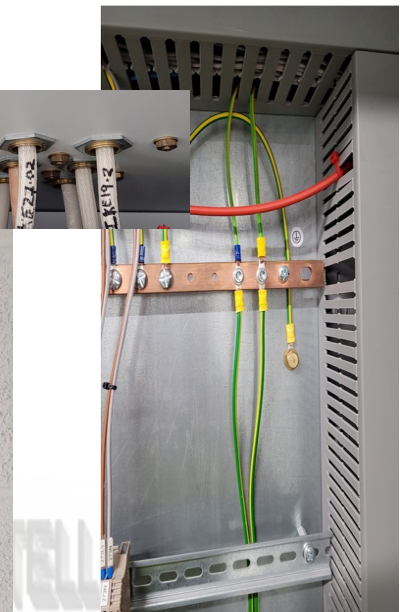
Bearing Damage from Variable Speed Drives is a common issue.

AF500 Fan 55kW showing signs of Bearing damage had a 10 Second count of 26533 EMF with SKF Tked1 (That's an elevated reading).



The first step is too **ensure proper grounding.**

85% reduction to 3944 counts by:
Earthing Back Plane, Earthing Cable glands,
and Cable Screens.



The Second Step is to fit EMF (ElectroMagneticFrequency) Cores. These EMF Cores contain a nanocrystalline powder that filters High Frequency Current typically >40kHz not affecting normal 50Hz supply.

The final Result **190 counts** in 10 Seconds
Thats a **99.2% reduction in Harmful Drive emissions** that
attack Motor Insulation, Lubrication and Bearings.
This is a permanent fix at the source that doesn't degrade or fail.
Note: Insulated Bearings and Grounding Brushes don't protect
Motor Insulation.



Well done GA Petfood, it's a pleasure for <http://www.3Phi-Reliability.com/>
to work with a reliability focused Team.

AF500 fan cables were reading 26533counts with the TKED , after i did the earthing on the cable correctly the readings reduced to 3944counts , after the crystalline cores fitted the readings reduced to 190counts. Big drop from 26533counts down to 190counts , which proves the earthing and cores do the job of getting rid of cable interference .

Regards

Paul Leyland

Senior Electrical Automation Engineer GA Petfoods.

